



22 September 2021

# Media release

## Green shoots at Queen's Wharf Brisbane

**A family-owned Caboolture business is helping transform the concrete face of the \$3.6 billion Queen's Wharf Brisbane precinct into a lush, green space.**

Greenstock Nursery at Elimbah north of Caboolture is supplying the bulk of the greenery with the first of 70 fully grown trees; a mix of natives and palms, planted on *The Landing*.

The shrubs and trees will bring to life 6,500m<sup>2</sup> of the public space that extends over the Brisbane River transforming them to floating garden parks.

"This is no doubt one of the biggest if not the biggest project we've been involved with in our thirty years of business," said Nick Phillips from Greenstock Nursery.

"This project is massive, and we have been working on it for years with the trees earmarked for Queen's Wharf potted-up for the past two," said Mr Phillips.

"Some of the mature trees are up to 10 metres tall and well over a decade old so they will beautify the space immediately," he said.

"We are excited to be part of such a significant Queensland project."

Geoff Hogg said The Star Entertainment Group is proud to be supporting local suppliers, businesses and jobs.

"We are building a world-class tourism destination that will attract international visitors and acclaim but it's just as important the precinct is a place that Queenslanders have contributed to and will be proud of," he said.

"There are currently 40 workers and five subcontractors dedicated to the construction of the two riverfront landings, which now includes the landscaping.

"The beautiful plants from Caboolture's Greenstock Nursery and the design and installation by another two Queensland companies, CUSP Landscape Architecture based in Fortitude Valley and CBD Landscape Construction located in Ormeau, will be enjoyed by locals and families for generations to come."

The tree planting and landscaping works marks an exciting construction milestone said Destination Brisbane Consortium Project Director Simon Crooks.

"The Riverline public space, including The Landing will see 340 native water gum, lilly-pilly and palm trees with around 4,000 plantings across the entire 7.5ha of the project," he said.

"People will be able to see it up close next month when we divert bikeway users onto the Landing while other work start under the Riverside Expressway."

"Once fully open, the trees will provide shade for cyclists and walkers and will be a great a place for families to enjoy and for events along the river.

"Imagine watching Riverfire from there when we open in the first half of 2023."

**Destination Brisbane Consortium**  
(ABN 50 157 953 414)

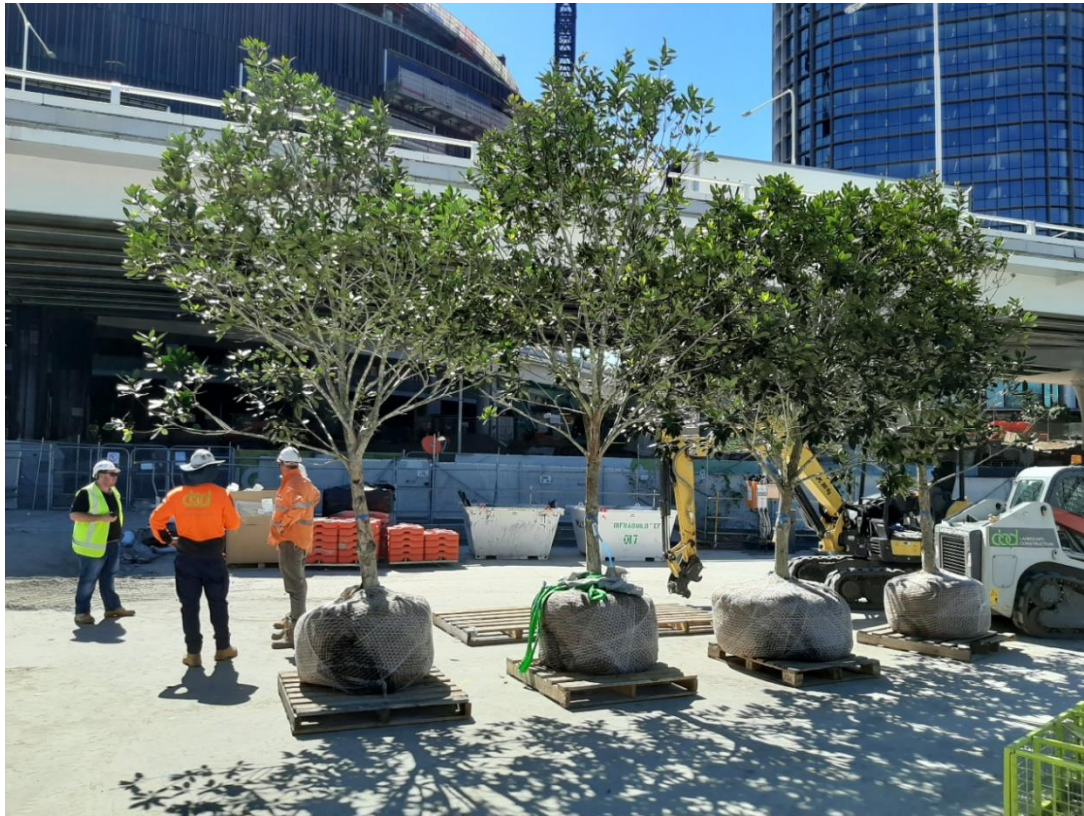
1800 104 535

[QWBenquiries@destinationbrisbane.com.au](mailto:QWBenquiries@destinationbrisbane.com.au)  
PO Box 13226 | George street, Brisbane Q 4003

[www.queenswharfbrisbane.com.au](http://www.queenswharfbrisbane.com.au)

The next batch of tree plantings will take place on Friday.

For more information on Queen's wharf visit [www.queenswharfbrisbane.com.au](http://www.queenswharfbrisbane.com.au)



**Image: Trees set to be planted at The Landing, September 2021**

**ENDS**

**Further information:**

Graham Witherspoon | Stakeholder & Communications Manager  
Destination Brisbane Consortium  
T: 0424 435 345  
E: [gwitherspoon@destinationbrisbane.com.au](mailto:gwitherspoon@destinationbrisbane.com.au)

or

Karryn Wheelans | Media Manager The Star Entertainment Group  
T: 0431 151 009  
E: [Karryn.wheelans@star.com.au](mailto:Karryn.wheelans@star.com.au)