



In 2017 Destination Brisbane Consortium began work on Queen's Wharf Brisbane, a world-class integrated resort development situated in the CBD.

Brisbane is changing and together with other tourism infrastructure projects like the second airport runway and Howard Smith Wharves that are already underway along with the proposed Mega Cruise Ship Terminal and Brisbane Live arena, Brisbane is fast becoming an entertainment, leisure and tourism destination.

In 2022 when Queen's Wharf Brisbane is expected to open on the banks of the Brisbane River, this unique and vibrant development will transform our river city by creating an exciting and new playground for the residents of Brisbane to enjoy.

Queen's Wharf Brisbane will provide high quality public spaces that will attract locals and visitors alike including a free Sky Deck more than 100 metres high and recreation areas under the Riverside Expressway.

It will be a vibrant, mixed-use destination that will offer multiple attractions including:

- ✱ 12 football fields of public spaces
- ✱ Iconic Sky Deck more than 100 metres above William Street
- ✱ 50 new restaurants, bars and cafes

- ✱ High-end and new retail offerings
- ✱ Repurposed heritage buildings
- ✱ New world-class casino to replace the existing Treasury Casino
- ✱ Entertainment facilities including ballroom and moonlight cinema
- ✱ More than 1,000 premium hotel rooms operating under 5 new hotel brands
- ✱ 2,000 residential apartments
- ✱ A new pedestrian bridge connecting South Bank to the CBD.

Positioned on the river's edge and directly opposite South Bank, in an underutilised area in the city, Queen's Wharf Brisbane will maximise Brisbane's 300+ days of sunshine a year with dining, entertainment and recreation options.

A development framework

The Queen's Wharf Brisbane Plan of Development was lodged with Economic Development Queensland (EDQ) for assessment in May 2017.

The masterplan that will steer the design of Queensland's largest development, the multi-billion dollar Queen's Wharf Brisbane integrated resort development, has been submitted to the Queensland Government for assessment.

Destination Brisbane Consortium worked closely with the Queensland Government for more than 18 months in the lead-up to lodging the Plan of Development.

Destination Brisbane Consortium Project Director Simon Crooks said the Plan of Development provides a clear vision for the Queen's Wharf Brisbane development and one that offers extensive benefits to Queensland.

The plan consists of almost 40 reports and thousands of pages of design, planning and vision for the precinct, which is a currently under utilised riverfront area of the CBD.

The plan is available to view on EDQ website - <http://dilgp.qld.gov.au/planning/development-assessment/priority-development-area-development-applications.html>.

EDQ will assess the plan of development against:

- ✱ its iconic contribution to the city,
- ✱ how heritage places are being conserved; and
- ✱ how the development enhances connectivity between the city and the riverfront.

As part of the approval process, there will be a 30-day public comment period. For more information visit the EDQ website listed above or the project website www.queenswharfbrisbane.com.au.

"The scale of Queen's Wharf Brisbane is like nothing our city has seen before, and it is vital that our plan therefore maximises the linkages and opportunities for Brisbane's existing offerings with our future development."



BRISBANE TEMPTING

...we'll use Queensland produce to offer locals and visitors the very best.

BRISBANE FOR EVERYONE

To stay informed about the Queen's Wharf Brisbane project:

- ✱ Log onto our website www.queenswharfbrisbane.com.au for the latest news or to subscribe for updates
- ✱ Follow us on Facebook/ [queenswharfbrisbane](https://www.facebook.com/queenswharfbrisbane)
- ✱ Check out our Instagram pictures at [queenswharfbrisbane](https://www.instagram.com/queenswharfbrisbane)

Simon Crooks

*Project Director
Destination Brisbane Consortium*



Brisbane is changing, the city is transforming - one project at a time and when Queen's Wharf Brisbane is complete, it will have a very competitive offering.

We understand how fiercely competitive the tourism marketplace is and if Queen's Wharf Brisbane is to succeed we cannot simply replicate attractive infrastructure from elsewhere, and hope that visitors will come. So in developing our plans we have applied the considerable collective expertise and knowledge of all the consortium partners and expert consultants.

Our research, and that of Brisbane Marketing, indicates that the reputation of Brisbane and Queensland centres on the openness and warmth of the community's welcome.

Queen's Wharf Brisbane is designed not only to appeal to interstate and international visitors, but also to appeal to locals. The energy, warmth and welcome of the local community will in turn become a distinguishing, competitive feature of the new precinct's appeal to visitors - one that is unique to Queen's Wharf Brisbane.

Frequently Asked Questions

Who is developing Queen's Wharf Brisbane?

Destination Brisbane Consortium is the successful proponent that was selected by the Queensland Government in 2015 to develop the \$3 billion Queen's Wharf Brisbane integrated resort development.

Who is Destination Brisbane Consortium?

Destination Brisbane Consortium consists of The Star Entertainment Group (50%), Far East Consortium Australia (25%) and Chow Tai Fook Enterprises (25%).

Where will the new integrated resort be located?

The development will cover more than 12 hectares of currently underutilised land. The area extends from the Treasury Casino building at the top of the Queen Street Mall to Alice Street, and from the Brisbane River's edge up to George Street.

Which buildings are being demolished?

Three non-heritage buildings are being demolished to make way for the development. They are:

- ✱ 80A & 80B George Street (formerly Department of Housing & Public Works)
- ✱ 100 George Street (formerly Executive Building and Annexe)
- ✱ 75 William Street (formerly Neville Bonner Building).

What is happening to the heritage buildings?

Destination Brisbane Consortium understands the heritage buildings in the precinct are treasured assets. They are also highly valued by the Consortium and will be extensively restored and refurbished through the development process. We look forward to restoring these heritage buildings and opening them up for the general public to enjoy as restaurants, retail and entertainment spaces. In the interim, extensive protection and monitoring has been applied to all heritage buildings.

What green star rating will the Queen's Wharf Brisbane integrated resort have?

Queen's Wharf Brisbane will be a world-class environmentally-sustainable precinct that is built to a six-star Green Star Communities Rating. That means it will be a user friendly, accessible and pedestrian friendly development. The precinct will showcase and maximise energy efficiencies and water conservation.

Will the development mean two casinos for Brisbane?

No. A new world-class casino, which will be less than five per cent of the overall development, will replace the existing Treasury Casino. The Treasury Building will be refurbished as a high end department store.

Is the Queen's Wharf Brisbane Precinct now owned by the Consortium?

Destination Brisbane Consortium has a 99 year lease with the Queensland Government.

Find out more at: www.queenswharfbrisbane.com.au

Feedback

We would love to know what interests you most and if you would like to stay informed about the Queen's Wharf Brisbane development.

Log on to our website www.queenswharfbrisbane.com.au/haveyoursay/ or scan this code to provide us with feedback on your areas of interest or to ask a question.

You can also register for news and construction updates while you are online.



Economic benefits for Queensland

More than
2,000 jobs
during peak construction

8,000 jobs
once operational

1.39m
additional tourists
expected each year

\$1.69b
annual increase in
tourism spend

\$272m
upfront fees to the
Queensland Government

\$880m
in guaranteed taxes to the
Queensland Government over
10 years



Contact us

General enquiries

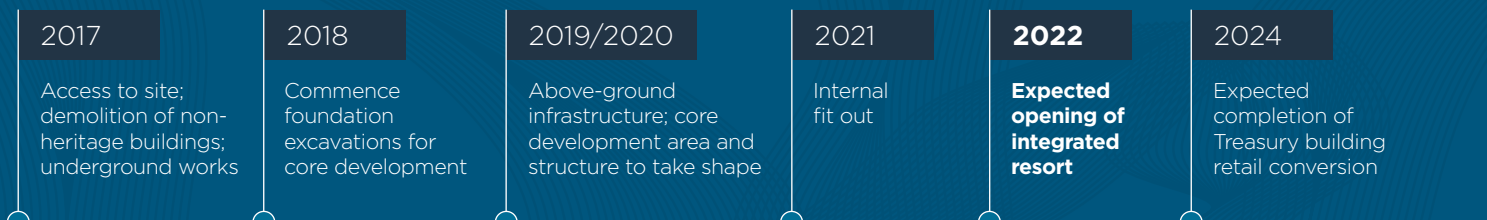
- ☎ 1800 104 535 (toll free)
- ✉ qwbenquiries@destinationbrisbane.com.au
- 📘 [facebook.com/queenswharfbrisbane](https://www.facebook.com/queenswharfbrisbane)
- 📷 [instagram/queenswharfbrisbane](https://www.instagram.com/queenswharfbrisbane)

Construction enquiries

- ☎ 1800 676 329 (toll free)
- ✉ queenswharf@probuild.com.au

© Destination Brisbane Consortium. All rights reserved. Some images are artist's impressions. Subject to planning approvals.

PROJECT TIMELINE



Invigorating our heritage

Queen's Wharf Brisbane is recognised as the birthplace of Brisbane's European history, and home to the most significant cluster of heritage buildings and places in Australia dating back to the early 1800s.

In total there are nine heritage buildings and two heritage parks within the Queen's Wharf Brisbane precinct. Some of these buildings have been inaccessible to the general public for many years, but as part of the Queen's Wharf Brisbane development, these buildings will be restored and reactivated as restaurants, bars and retail outlets so that they can be enjoyed by everyone.

The preserved heritage listed buildings/parks include:

- 1 The Treasury Building
- 2 Queens Gardens
- 3 The Land Administration Building
- 4 The Government Printery
- 5 Harris Terrace
- 6 The Mansions
- 7 The Printery Office
- 8 The old Department of Primary Industries Building
- 9 The Commissariat Store Museum and Miller Park
- 10 The old State Library Building
- 11 William Street and Queens Wharf Road (heritage-listed retaining walls).

Blending both historic and contemporary architecture, the landmark development will result in an unforgettable destination that locals and tourists will be drawn to.

Dean Prangley

President, The Royal Historical Society of Queensland (RHSQ)



As the peak Queensland history body, we look forward to Queen's Wharf Brisbane bringing to life our remarkable heritage buildings and places, located in the historic Queen's Wharf Brisbane precinct.

Within this precinct, our society is housed in the oldest occupied building in Queensland. We know better than anyone that this has been a largely underutilised and neglected part of the city with most of its beautiful heritage buildings closed to the public.

Queen's Wharf Brisbane brings an exciting opportunity for everyone – young and old, local or visiting – to finally explore both the Aboriginal and European history of Brisbane through the restoration and reactivation of these spaces. The heritage buildings in the precinct will completely transform offering a variety of restaurants, bars, entertainment, tourism, cultural, and retail experiences.

RHSQ continues to operate from the Commissariat Store Museum at 115 William Street, Brisbane, which will remain open throughout construction of Queen's Wharf Brisbane. They are open Tuesday to Friday and walk-ins are welcome.



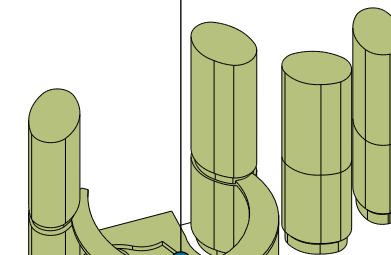
Public places and spaces to enjoy

In total our development will have more than 12 football fields of free and accessible public space for people to enjoy.

Public Services and Printery Courtyards, and Stephens Lane

Think about all the great cities in the world and some of their amazing courtyards and laneways ... this is what we will deliver throughout the development, but especially around Stephens Lane and the courtyard at the back of the former Printery Office.

This area will host a range of events and include food and music festivals to fully activate the space and make it a destination in itself.



Sky Deck

Positioned more than 100m above William Street, and facing the Brisbane River, the Sky Deck offering 360 degree views will be a picture postcard moment for all who visit. Better yet, once you've taken your picture, why not stay on and enjoy a drink or something to eat from one of the restaurants or bars located on our Sky Deck.



Mangrove Walk

The new Mangrove Walk along the Brisbane River will become a well used feature of the Queen's Wharf Brisbane development.

The 440 metre pedestrian walk will be built in the Brisbane River and traverse mangroves as it meanders along parallel to the Bicentennial Bikeway, which will be upgraded and improved for safety.

It will also offer dedicated rest stops where you can sit and enjoy the vista.

The walk will offer interpretative heritage and story telling elements, along with a boat shed café and City Cat ferry terminal.

Work on the new Mangrove Walk is expected to start in 2018, enabling it to be ready earlier than the development's expected opening in 2022.

Waterline Park

Positioned between 1 William Street and the river, Waterline Park will be a recreation hub on the river's edge that will offer nearby city workers and residents a place to sit, relax and enjoy the free green space. For those wanting to be more active, there will also be a range of outdoor exercise equipment and games to engage with.

Waterline Park, along with the Mangrove Walk will be one of the first public spaces to open, expected in late-2019.



The Landing

The Landing will be one of the largest public spaces in the development with a capacity for more than 26,000 people during major events. This area expands out past the Riverside Expressway into the river and sits directly in front of the arc shaped building, extending down towards 1 William Street.



Queen's Wharf Plaza

Brisbane's newest urban waterfront plaza will provide large, open and highly flexible public events and gathering spaces featuring a variety of terraced seating areas that will enable the plaza to be fully integrated to host large-scale public celebrations.

Brisbane Steps

The Brisbane Steps will be a key feature of the development. They will be expansive and draw people from George Street all the way down to the river's edge while providing seating and gathering areas to encourage people to stay longer.



For detailed information and images on the 12 football fields of public space, visit www.queenswharfbrisbane.com.au

All images are concept image only

BRISBANE
INFORMING

... ensure you stay up-to-date with changed traffic conditions and new routes at www.queenswharfbrisbane.com.au

BRISBANE
CONNECTING

... just like South Bank, we're turning Queen's Wharf Brisbane into an exciting new destination.

QUEEN'S WHARF
BRISBANE
www.queenswharfbrisbane.com.au

BRISBANE
RESTORING

... nine heritage buildings will be revitalised to provide memorable experiences for you.

BRISBANE
EMPLOYING

... we'll have 8,000 operational roles when we open.

BRISBANE
ENTICING