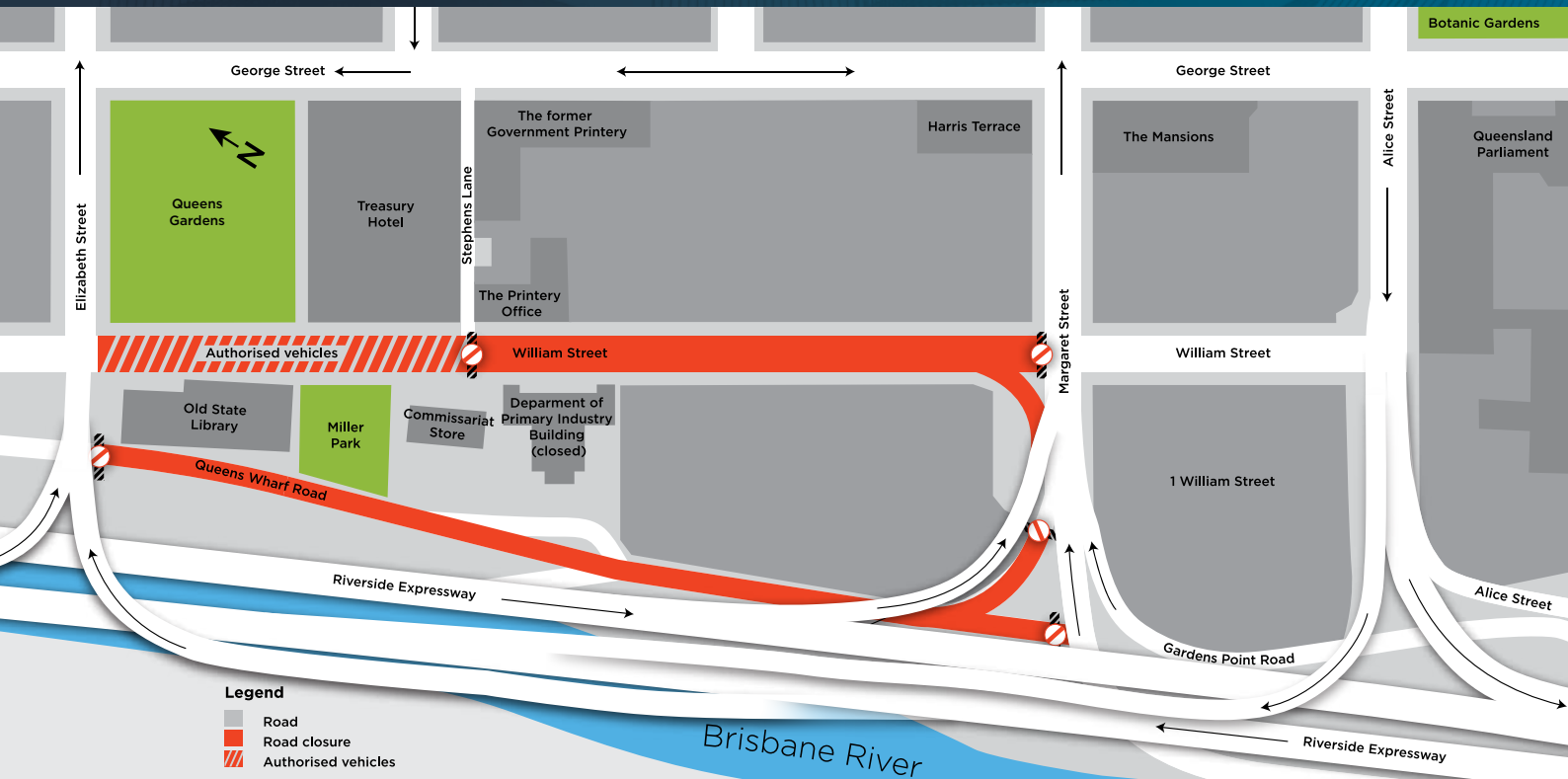


QUEEN'S WHARF BRISBANE

Traffic changes EFFECTIVE 1 JANUARY 2017



MAP OF TRAFFIC (VEHICLE) CHANGES (EFFECTIVE 1 JANUARY 2017)

Traffic and Transport Information

Queen's Wharf Brisbane will transform the Brisbane CBD through its Queensland inspired design that will include a mix of open public space and river front access; 50 new bars and restaurants; a publicly accessible Sky Deck; nightlife and family entertainment; local and international retail brands; as well as world-class five and six-star hotel brands.

Situated between the Brisbane River and George Street, and stretching from Alice Street to Queen Street, the integrated resort development will bring new life to the Brisbane CBD.

Construction activities will start in January 2017 for the core area of the development, which will house the iconic arc shaped buildings, hotels, restaurants and extensive public spaces, and will take approximately six years to build.

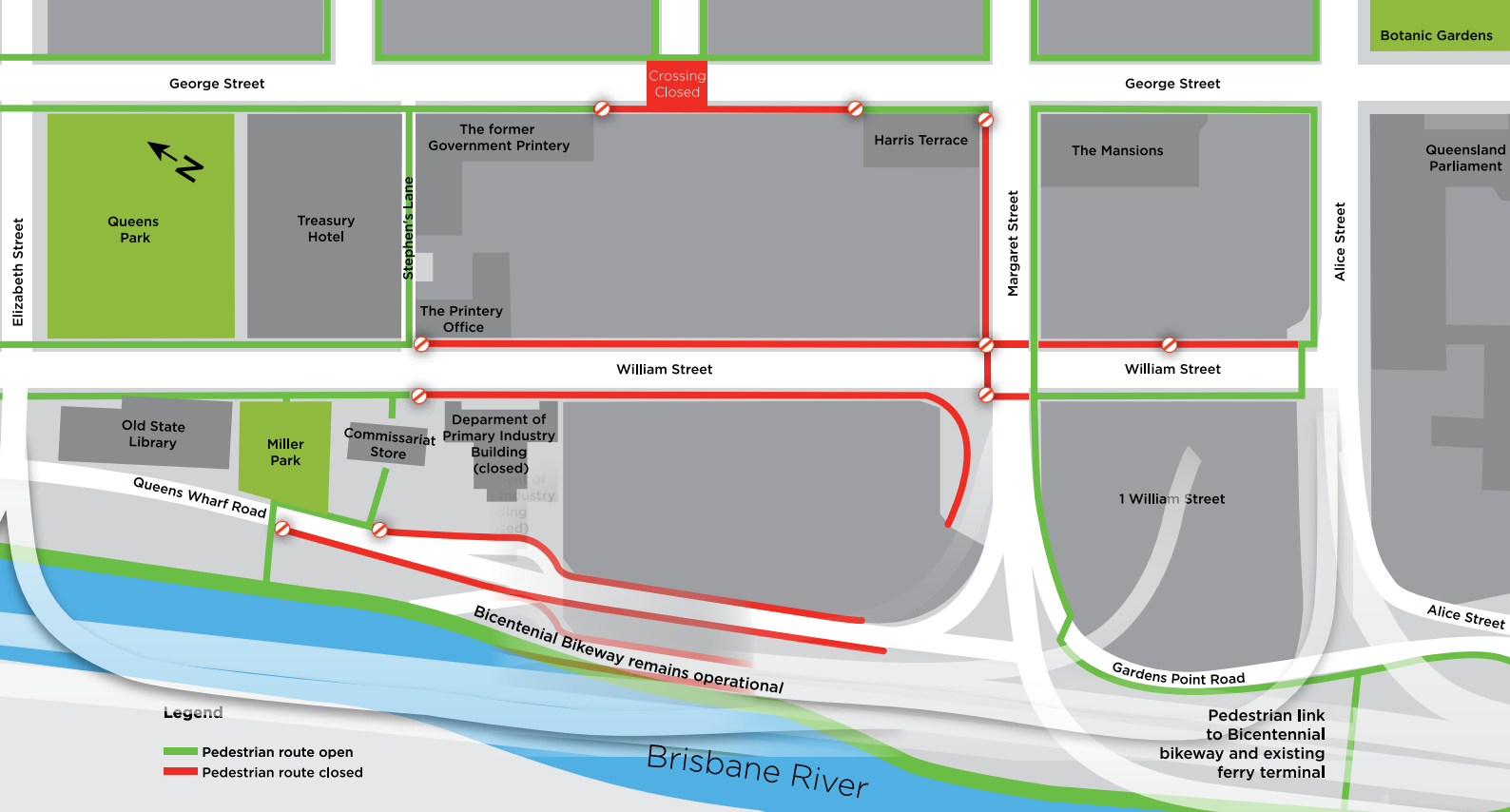
To enable construction activities and safely manage the project precinct, there will be changes to current traffic and transport routes. These changes will affect roads, car parking, pedestrian connectivity, public transport,

and bikeways. Destination Brisbane Consortium is working closely with the Queensland Government, Brisbane City Council and TransLink to manage the impacts of these changes.

CBD TRAFFIC CHANGES

From 1 January 2017, Queen's Wharf Road (adjacent to the Brisbane River) will be permanently closed to traffic and a section of William Street (between Elizabeth Street and Margaret Street) will be closed to pedestrian and vehicle traffic for the period of the Integrated Resort Development's construction. To stay informed about traffic conditions and changes visit www.131940.qld.gov.au or call **13 19 40**.

Changes have been made to bus services and scheduling so please visit the TransLink website www.translink.com.au, download the **MyTransLink App** or call **13 12 30** for information about current bus services. City train and access to ferry services will not be affected.



MAP OF CYCLE & PEDESTRIAN CHANGES (EFFECTIVE 1 JANUARY 2017)

CYCLE AND PEDESTRIAN CHANGES

The Bicentennial Bikeway will remain open during the demolition phase. However, the route for cyclists and pedestrians may change depending on construction works through the six-year build. Cyclists will be notified through extensive signage and traffic controllers will assist with the safe management of these spaces when necessary.

From 1 January 2017, pedestrian access along William Street will be closed between Stephen's Lane and Margaret streets, and the west side of George Street (between Charlotte and Margaret Streets) will be closed. This means pedestrian traffic will need to keep to the east side of George Street for this section of the road. However, bus stop 108 outside Harris Terrace will remain active for afternoon services.

ABOUT THE DESTINATION BRISBANE CONSORTIUM

Destination Brisbane Consortium involves three major partners: The Star Entertainment Group, Chow Tai Fook Enterprises, and Far East Consortium.

Together these partners have formed a joint-venture that will deliver the Queen's Wharf Brisbane, a multi-billion dollar Integrated Resort Development.

HOW CAN I STAY INFORMED ABOUT THESE CHANGES?

Information will be provided to near neighbours including residents and businesses, the local community, road users, and the general public via mailbox drop (within the immediate precinct) newspaper advertisements, our Queen's Wharf Brisbane Monthly Update (e-newsletter), Facebook page (Queen's Wharf Brisbane), and project website www.destinationbrisbaneconsortium.com.au.

If you would like to subscribe to our construction notices or monthly e-newsletter, please visit our website www.destinationbrisbaneconsortium.com.au and follow the links.



For more information visit www.destinationbrisbaneconsortium.com.au

Destination Brisbane Consortium

PO Box 13226
George street
Brisbane Q4003

📞 1800 104 535

@QWBenquiries@
destinationbrisbane.com.au

📘 facebook.com/
[queenswharfbrbane](https://www.facebook.com/queenswharfbrbane)

© Destination Brisbane Consortium. All rights reserved. All images are artist's impressions. Subject to planning approvals.